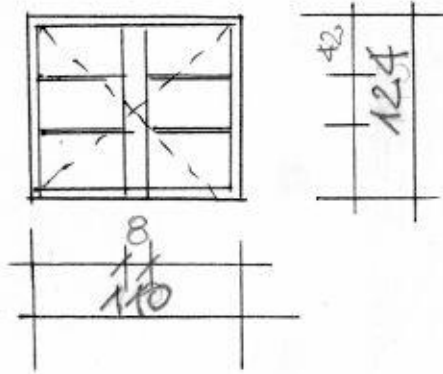


KŁATKA SCHOĐOWA NA ODDZIAK  
DZIECIECY.

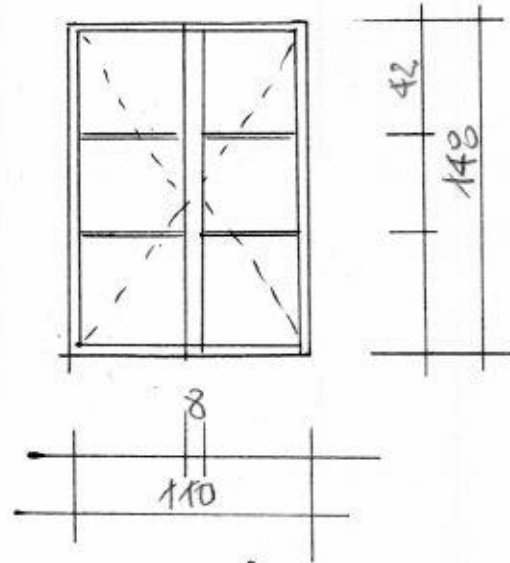
szk. 1. (I P)



parapet wew. 22 x 125

parapetzew. 15

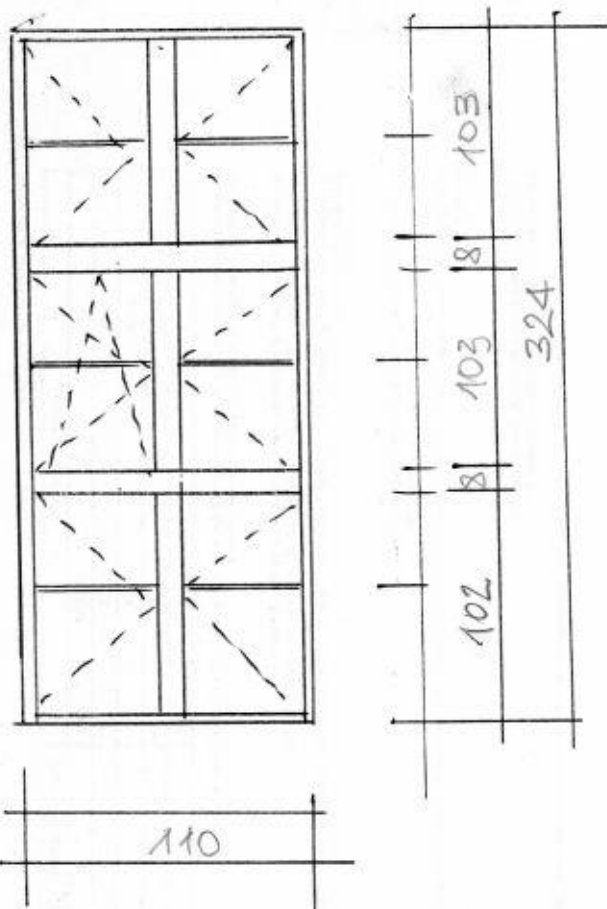
szk. 1. (II P)



parapet wew. 22 x 125

parapetzew. 15

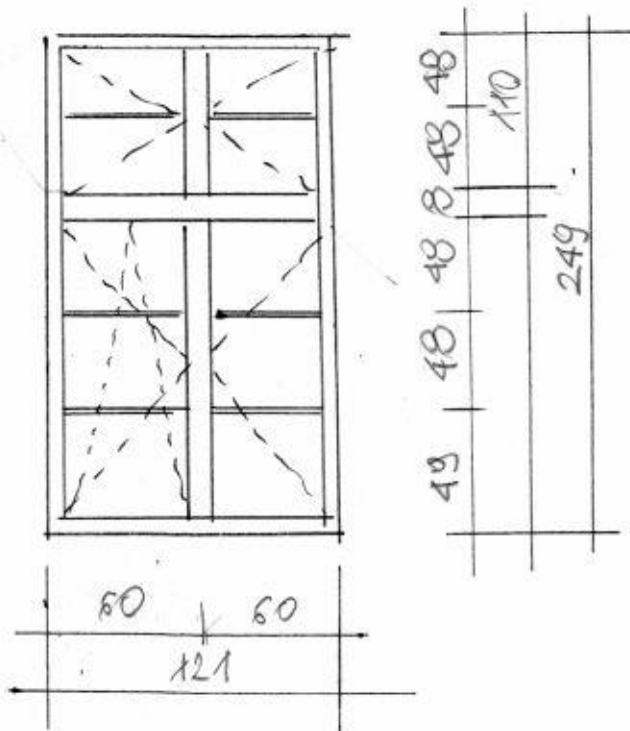
szk. 1.



parapet wew. 22 x 125

# ODDZIAŁ DZIECIĘCY

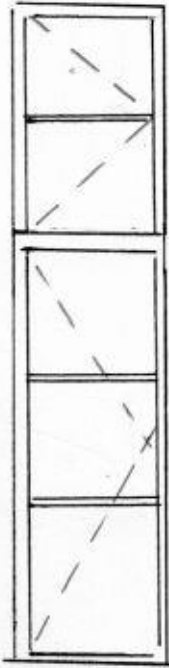
set. 12.



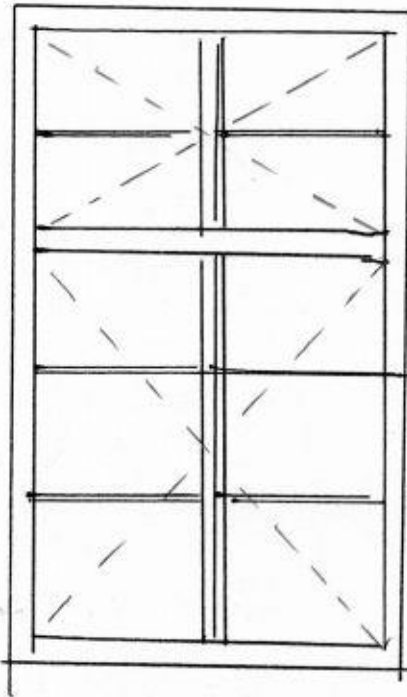
parapet wew. 15cm. sz. 144

parapet zew. 17cm

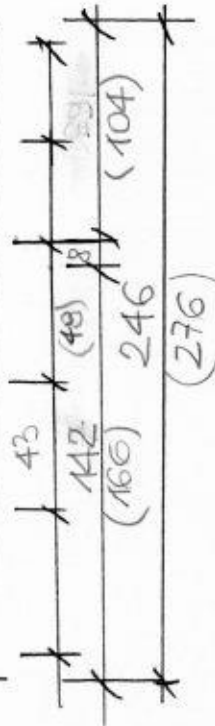
szk. 2



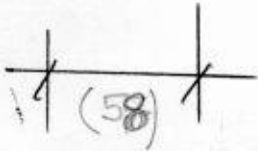
szk. 1



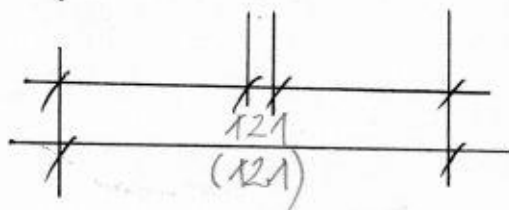
Łącznie 6 szk.



górnego otworu  
(dolnego otworu.)



parapet wew.

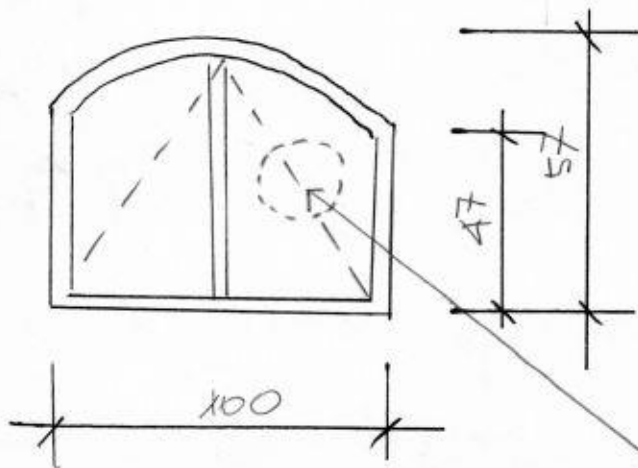


parapet wew. szk. 2

25 x 332

(półpauzy z  
noci elementu)

OKNA W PIWNICY przy kl. głośnej (szk. 14)

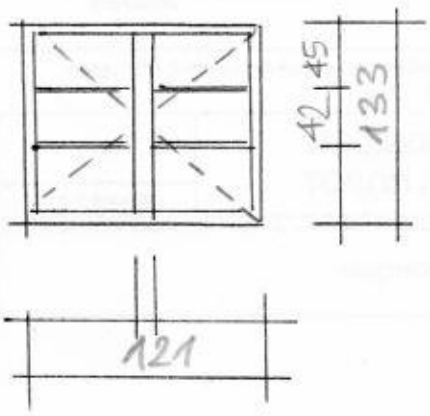


jedno z okien z  
pawelkami kraty  
wentylacyjnej.

ADMINISTRACJA BUDYNKU (projekt od partu).  
 poddasze.  
 z kl. oddr. dwuczęsto.

④

szk. 4.

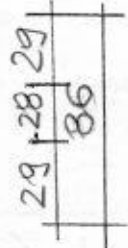
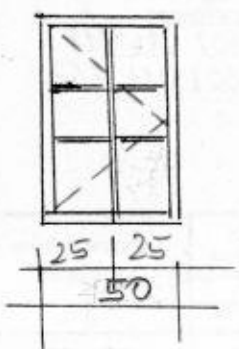


parapet. wew. 25 cm

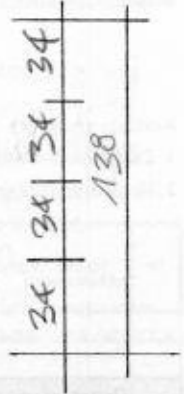
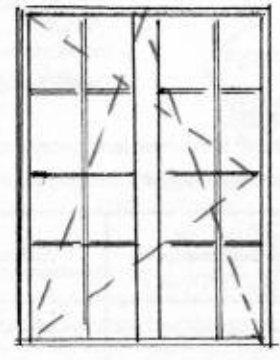
parapet zew. 17 cm.

STARE WEJŚCIE DO SZPITALA

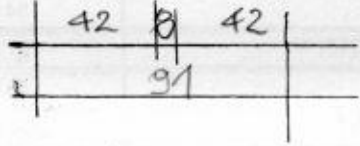
szk. 6



szk. 2



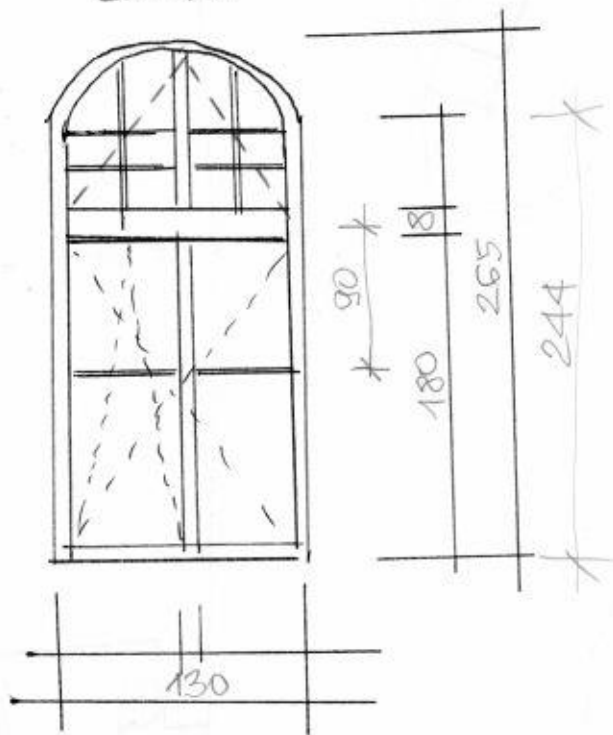
bez parapetu wew



KL. SCHODOWA DO ADMINISTRACJI  
SZPITALA.

5

szk. 2.

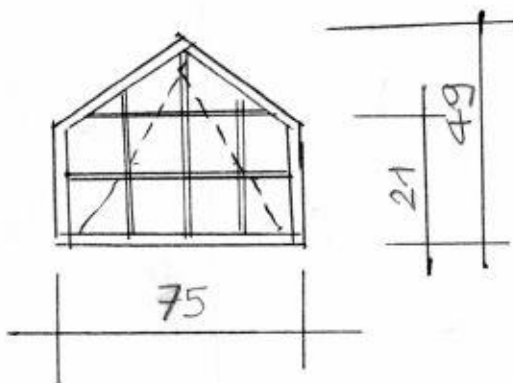


okopnik zew. szer. 7 cm

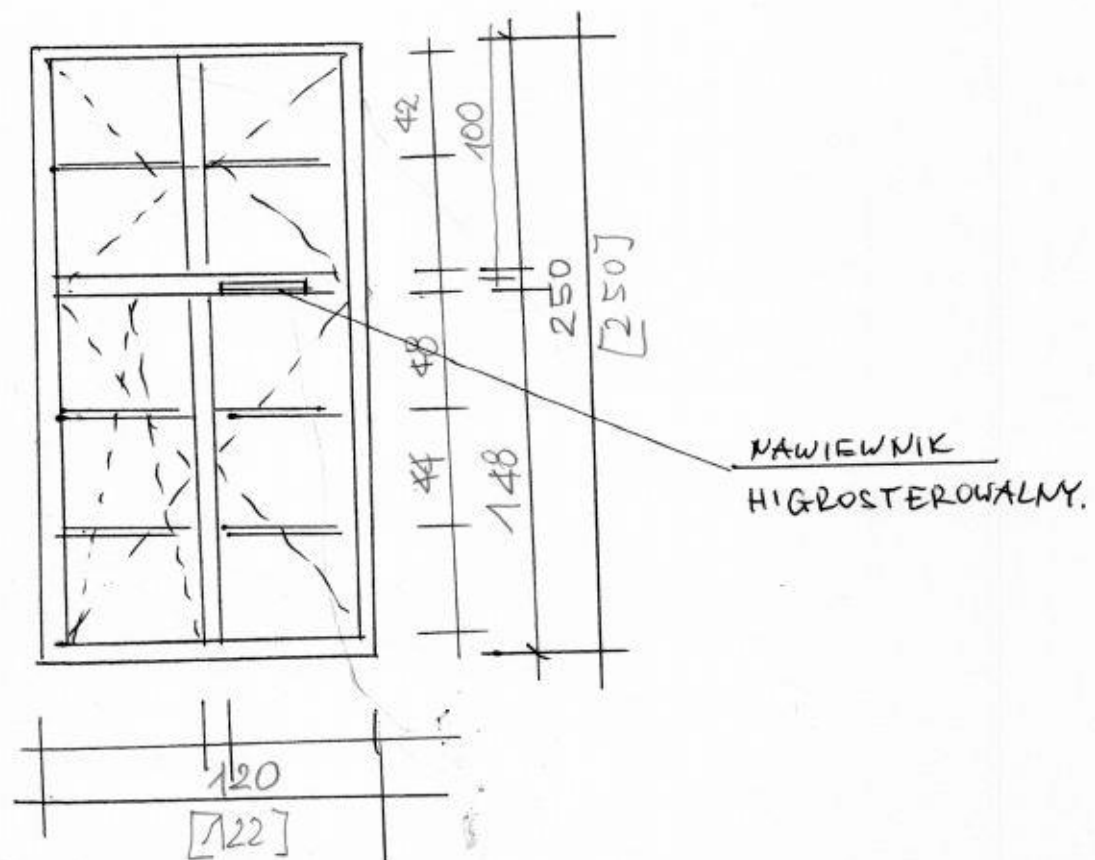
parapet wew. 32x150  
szk. 2

SZCZYT OD DZIŁA o ścianie szachulcowej (poddasze)

szk. 2.



bez parapetu i okopnika  
zew.

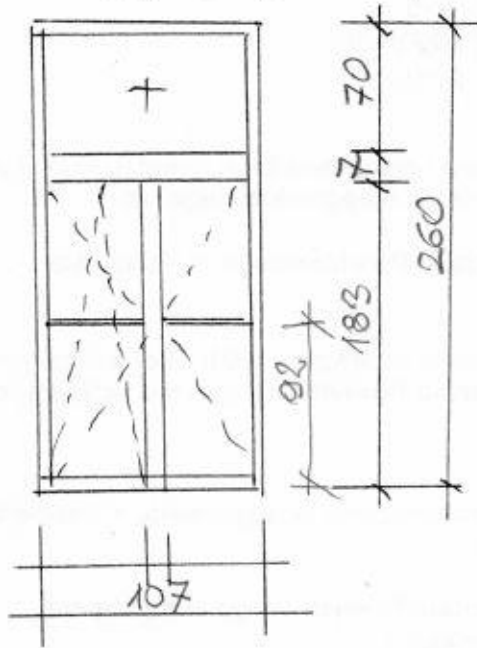


parapet zes. 25 gr. 32p (2 x 166)

parapet zes: 12

# LARYNGOLOGIA.

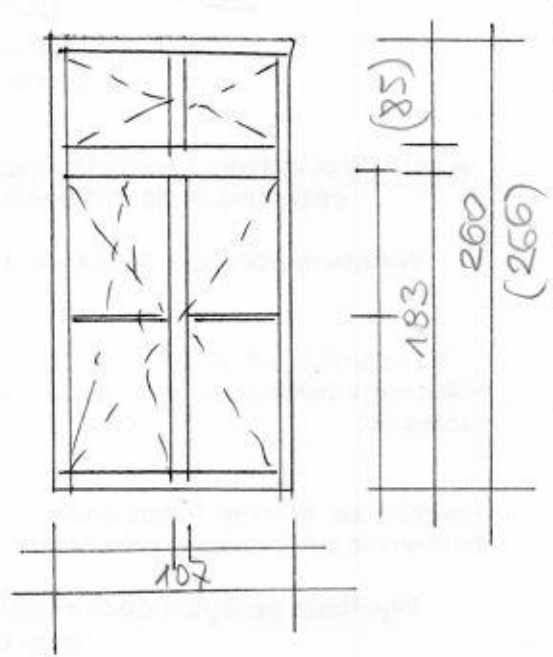
set. 3 (od Diehla)



parajet. ues. 20cm 130

otapuit zev. 13cm.

set. 5 (scut + srediniec)

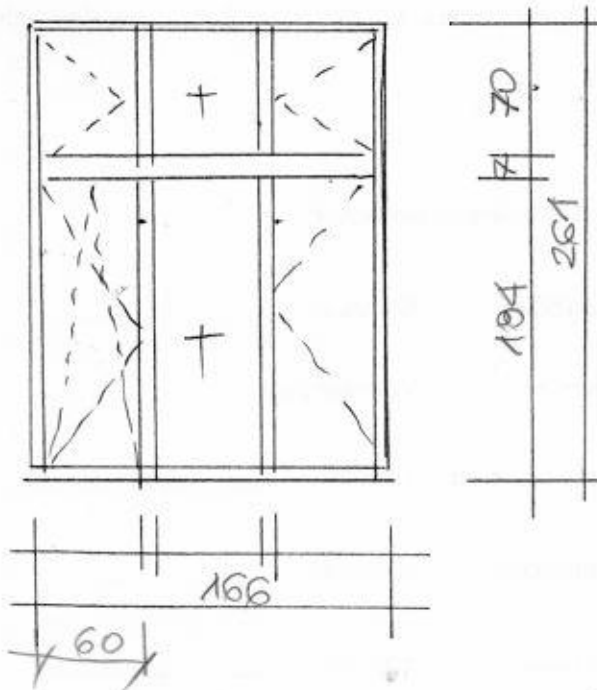


parajet. ues. 22, d. 260

otapuit zev. 12

Recepje Laryngologii

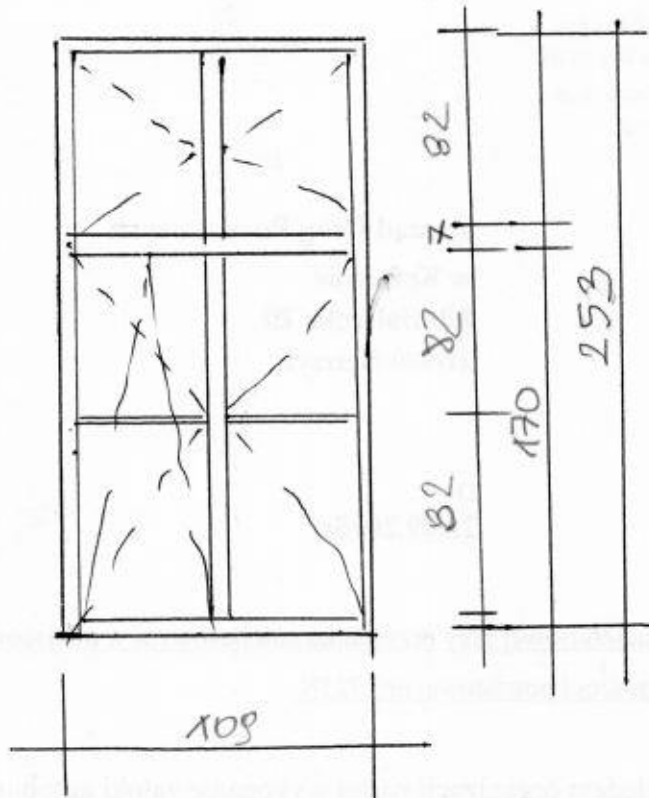
set. 1. (od sredinica)



parajet. ues. 22, d. 190

parajet zev. 12 cm.

BLOK OPERACYJNY (I P) od średnicy (8)

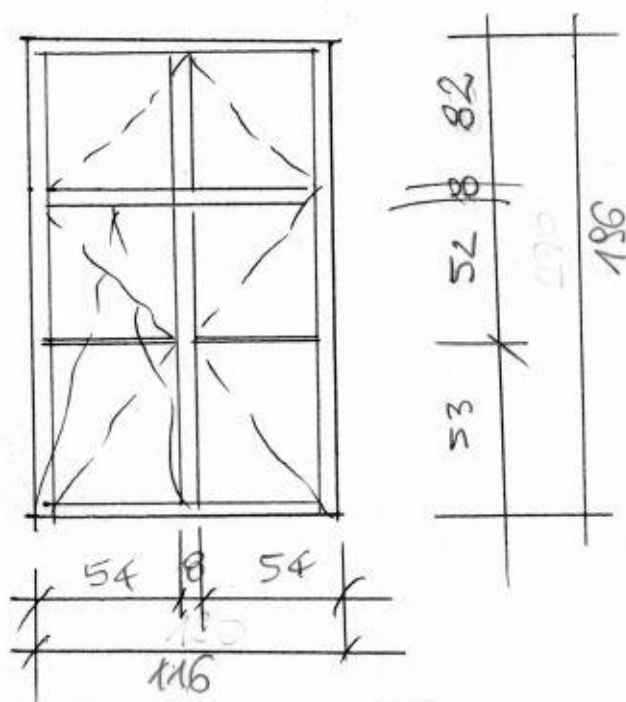


szk. 3

porębit <sup>zest.</sup> zest. 40  
 dt. 120

porębit zest. 16

Parter (od średnicy)



szk. 3

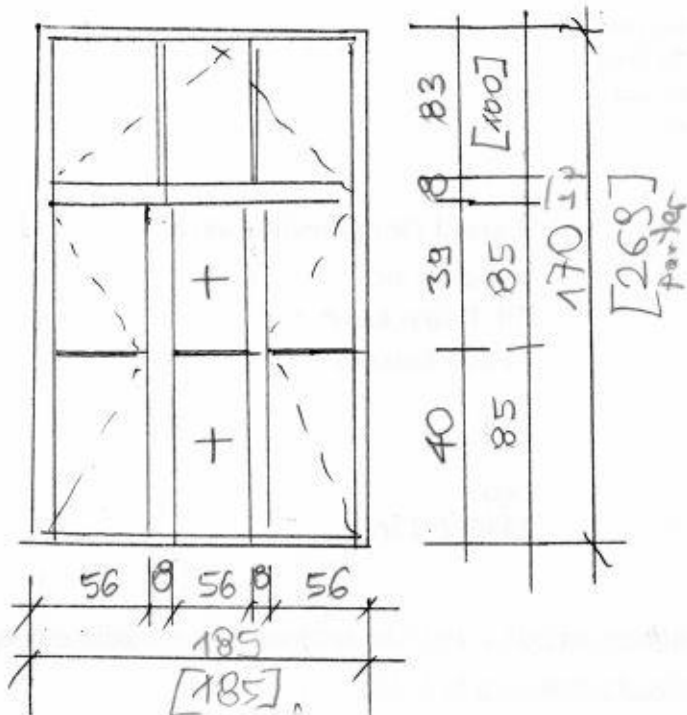
porębit. zest. 25  
 dt. 130

porębit. zest. 12cm

porębit. zest. 25  
 dt. 130



# BLOK OPERACYJNY (ocyt)



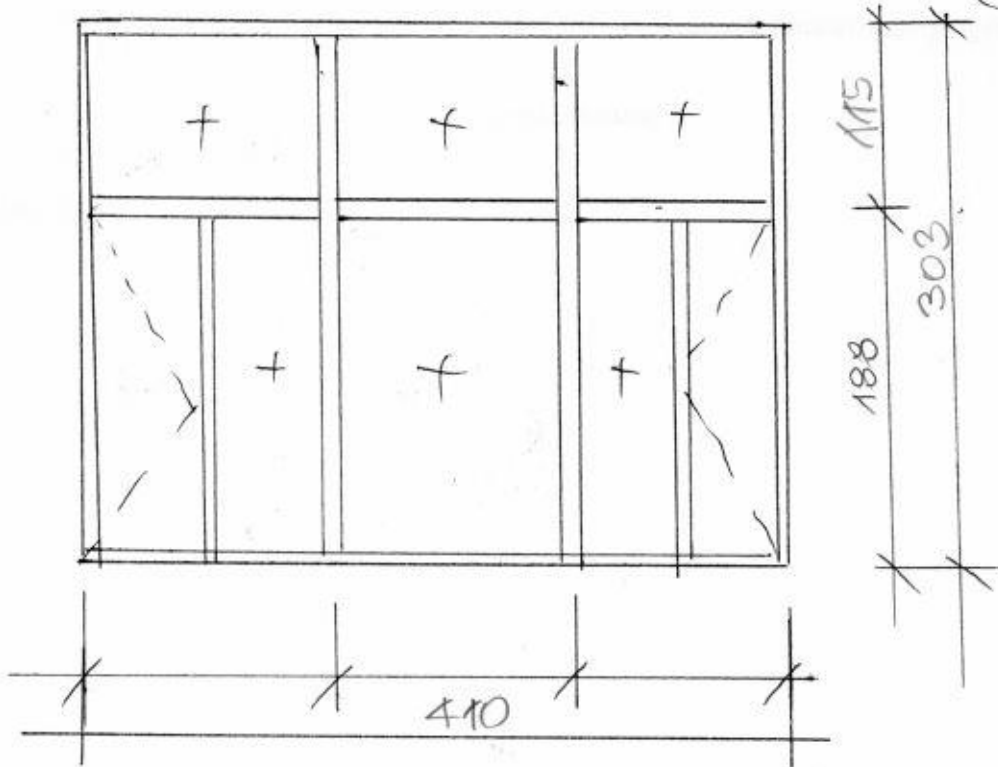
str. 2 → 4 szt. pionip  
 → 4 szt. dala partor

panjel. zer. 12

panjel. ocv. 40 cm.  
 dt. 200 cm

str. 1

(I.P.)



panjel ocv. 40 dt. 414

panjel zer.

BLOK OPERACYJNY (od st. M. Curt Skidoodziej) 10

st. 1 ✓



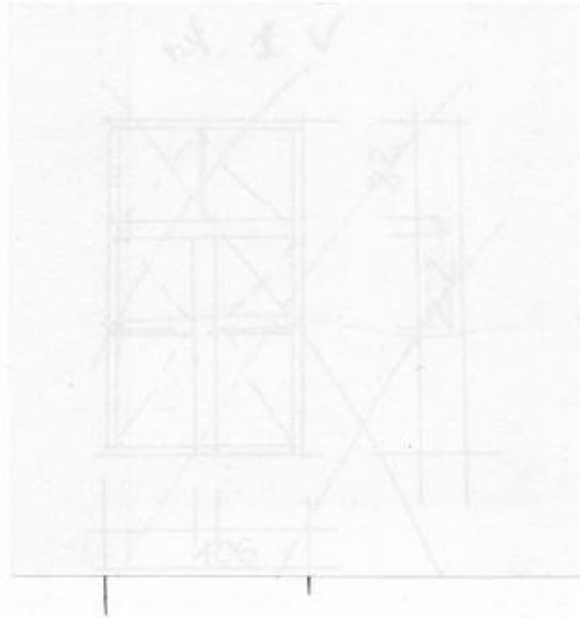
panjeł weł. 20  
 št. 130  
 zes. 12 cm.

st. 2 (parter)

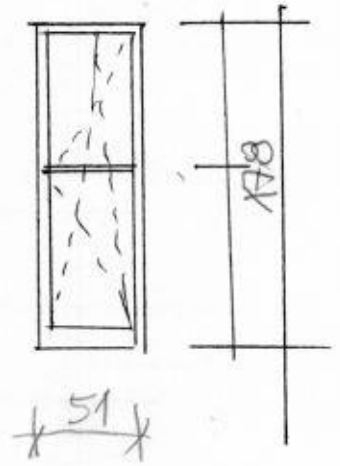


panjeł weł. 20  
 št. 130

panjeł. zes. 12



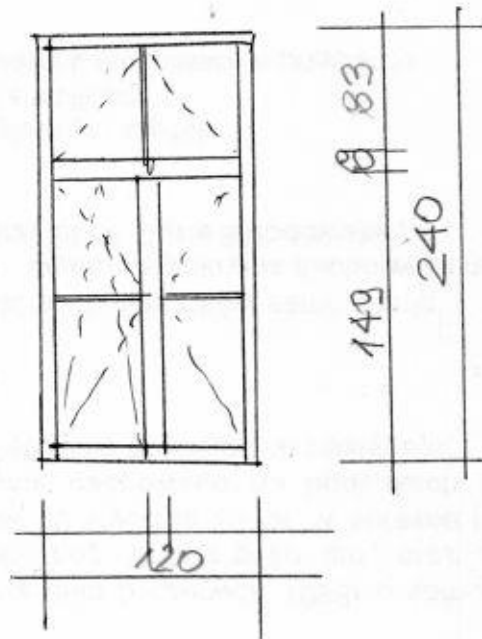
st. 2 ✓



okopulr 12

panjeł weł. 20  
 št. 100  
 2x 86.

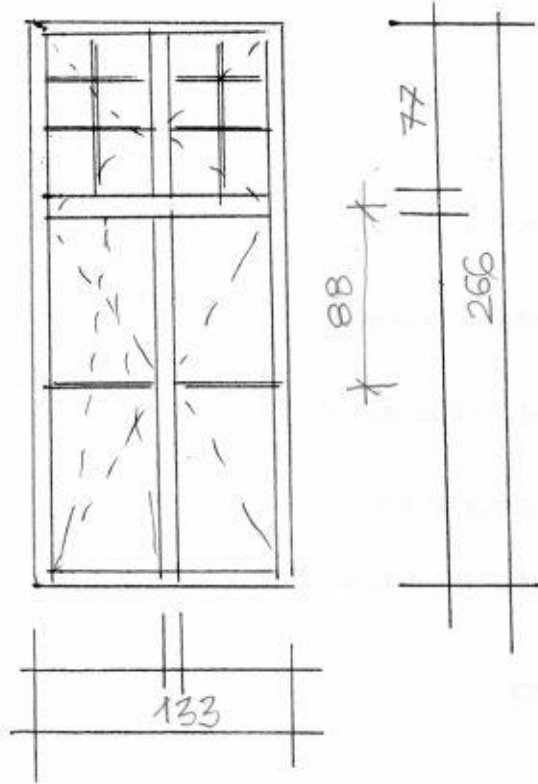
st. 2 (parter)



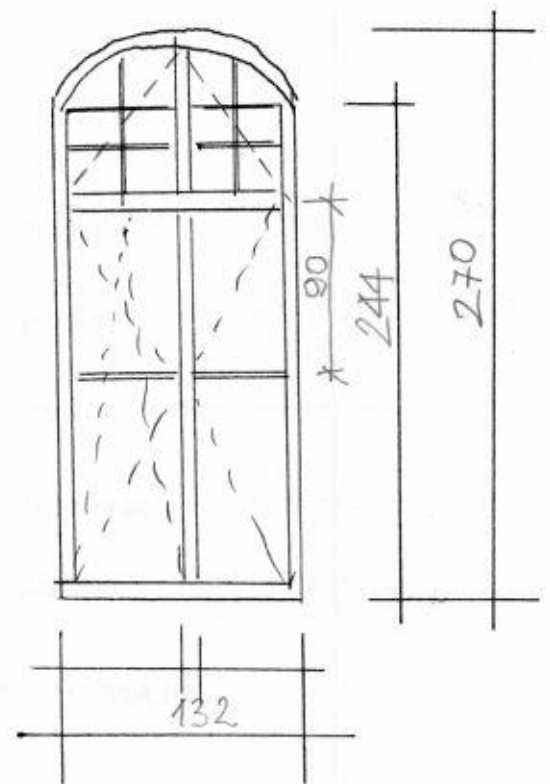
panjeł weł.

panjeł. zes.

szk. 2. (IP)



szk. 2



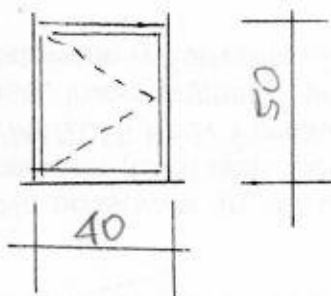
parapet wew. 32x145

parapet. wew. 42x145

parapet. zew. 12cm

zew. 12cm

szk. 1.

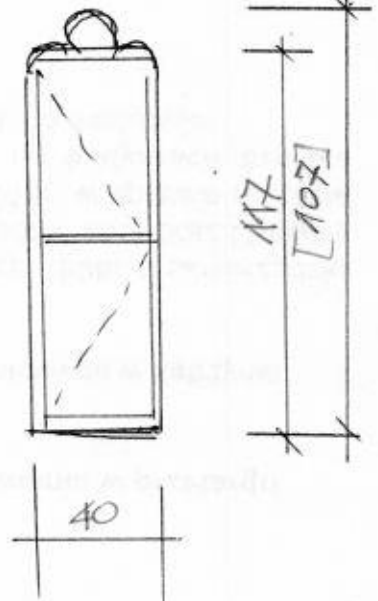


parapet. wew.

parapet. zew. 25 cm  
ser.

szk. 2

(1 szt. kl. do  
admiral. str.  
szpitala)

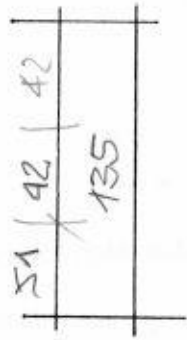
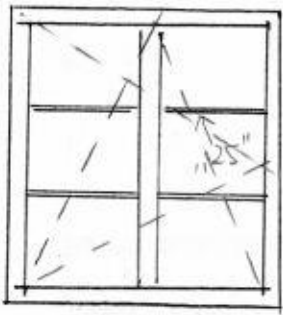


okap. zew. 20cm

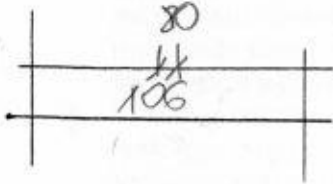
OKNA W KUCURKACH PODDASZA

a) NAD ODDZIAŁEM DZIECIĘCYM

szk. 2.



parapet szer. 15

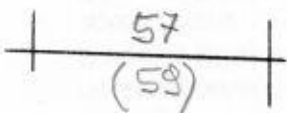
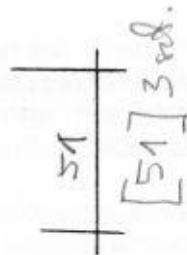
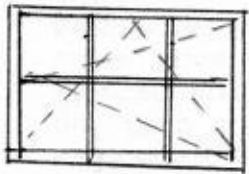


parapet szer. 106 x 14

zeo:

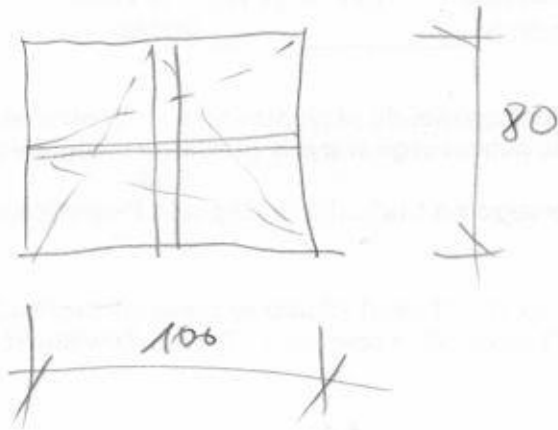
b) NAD LARYNGOLOGIA

szk. 9



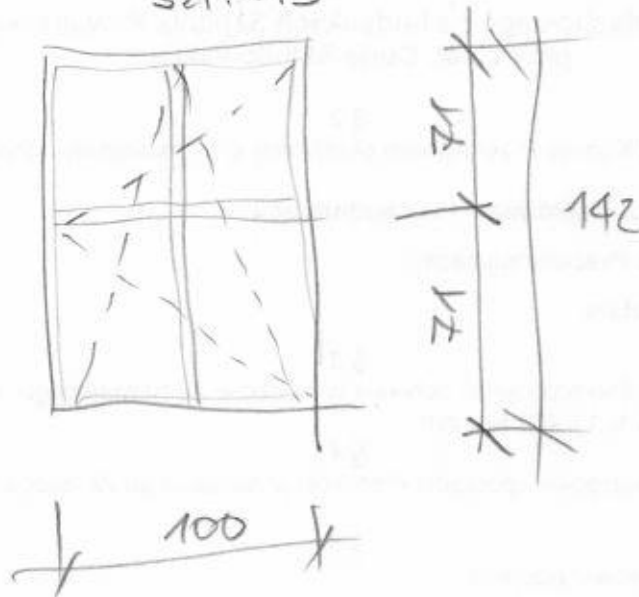
[58] - 3 szt.

szk. 2



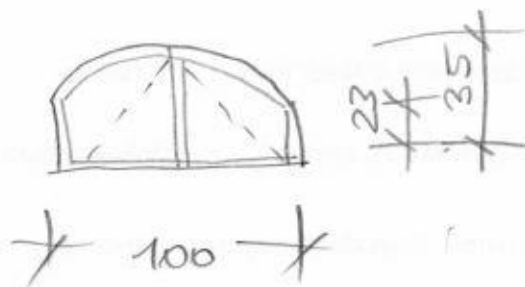
bez parapetu i  
otopników zes.

szk. 13



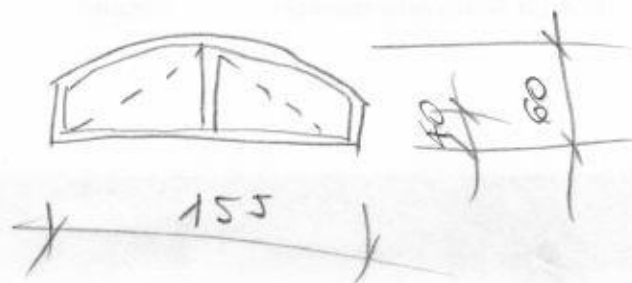
bez otopników zes.

szk. 3



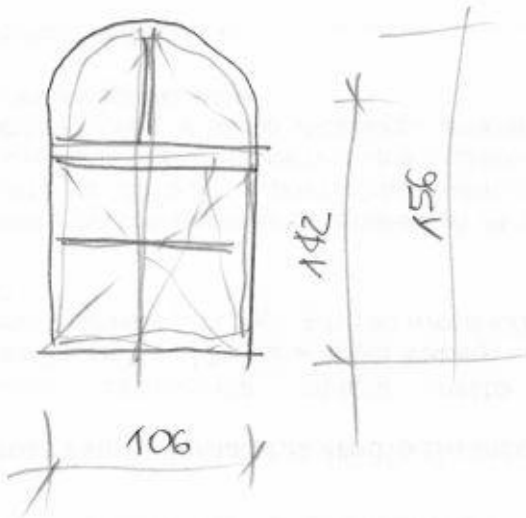
bez parapetu

szk. 1.



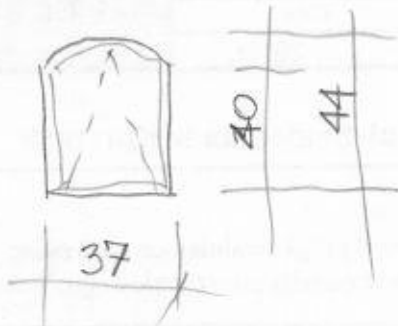
bez parapetu

ср. 4.



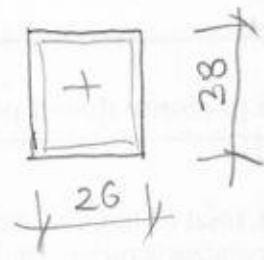
пояска сер. 0,3 м

sz. 1



bez parapetu

sz. 1

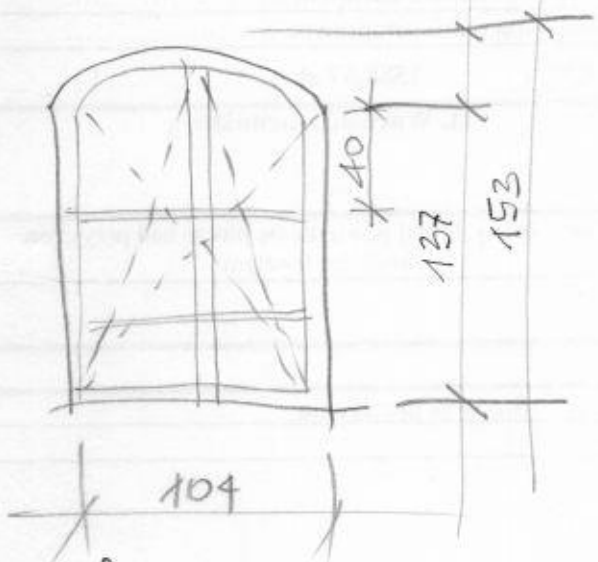


bez parapetu

okop. zw. 30.

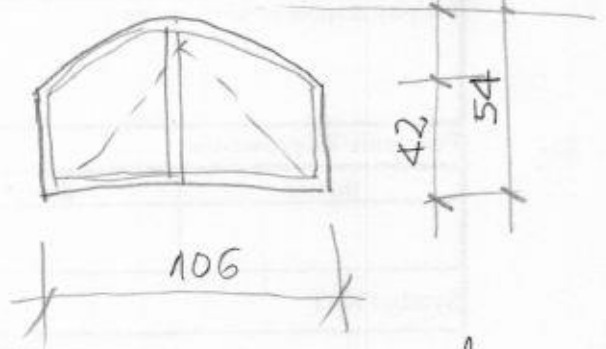
okop. zw. 27.

sz. 1



parapet zw. 20  
sz. 130

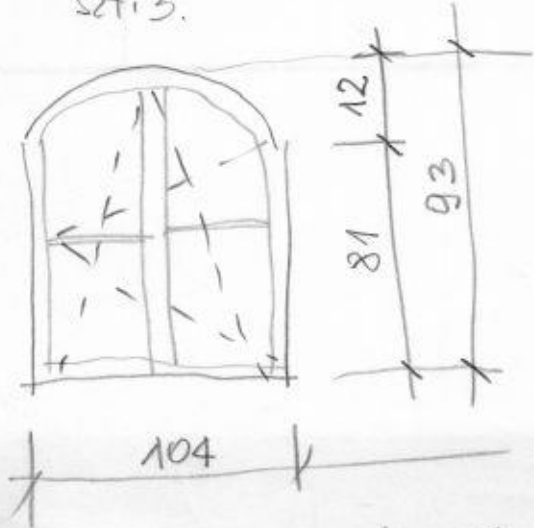
sz. 1.



bez parapetu

okop. zw. 27

sz. 3.



bez parapetu

okop. zw. 27.